



QC LED *Surface Mounted* POOL LIGHT

DESCRIPTION: SURFACE MOUNTED

Suitable For: New Concrete Pools and Fibreglass Pools

Colours Available: White, Blue, Green, Multi-Colour featuring Colour Selection Palette

Stainless Steel Option: No

Detachable Cable: Yes

Cable Types: 0.75mm² Cable in lengths of 20m and 30m.

Voltage: Variable Technology, 12v AC ~ 32v AC (legislation is 12v AC max for new pools)



Profile:
 Protrusion from wall: 67mm
 Lens Diameter: 230mm

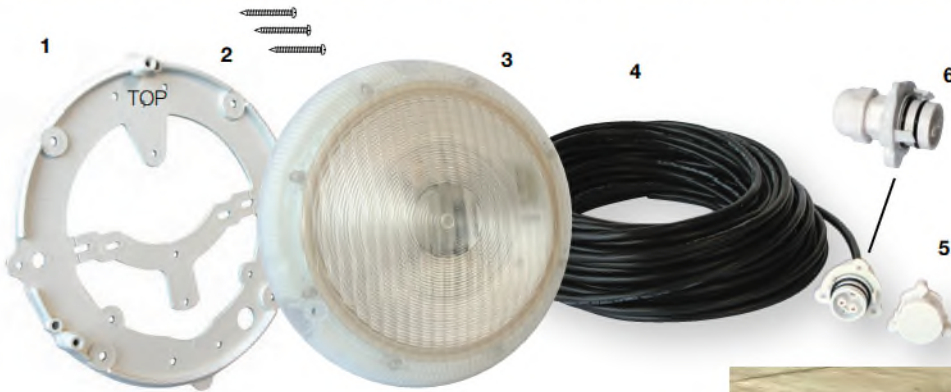
ORDER CODES

QC SERIES SURFACE MOUNTED LIGHTS

Complete with Light, Universal Mounting Bracket and Cable with Quick Connect Plug Kit, no Transformer

LED 001	20 METRE POOL LIGHT - FIXED COLOUR BLUE LED
LED 002	20 METRE POOL LIGHT - FIXED COLOUR WHITE LED
LED 003	20 METRE POOL LIGHT - FIXED COLOUR GREEN LED
LED 004	20 METRE POOL LIGHT - MULTI COLOUR LED
LED 031	30 METRE POOL LIGHT - FIXED COLOUR BLUE LED
LED 032	30 METRE POOL LIGHT - FIXED COLOUR WHITE LED
LED 033	30 METRE POOL LIGHT - FIXED COLOUR GREEN LED
LED 034	30 METRE POOL LIGHT - MULTI COLOUR LED

INCLUDED WITH THE QC SERIES LED POOL LIGHT FOR CONCRETE POOLS:



Item	Description
1	Universal Mounting Bracket
2	Mounting Screws x 3
3	LED Light Only
4	Cable, assembled with Quick Connect Plug
5	Cable Cap
6	Quick Connect Plug

SPECIFICATIONS:

Nominal Supply Voltage: 12v AC ~ 32v AC

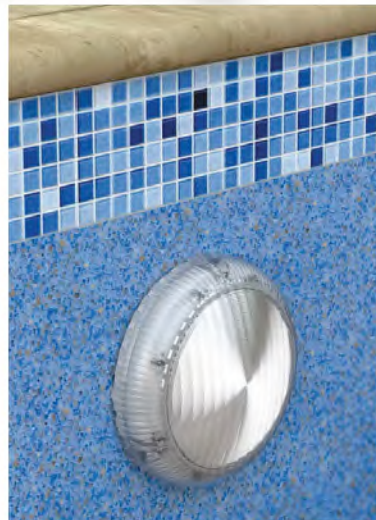
Power Consumption (white, blue, green): 16 VA max.

Power Consumption (multi-colour): 22 VA max.

Light Colour: White >5,000K, Blue 475nm, Green 525nm

Fault Protection: Thermal cutout.
Voltage Transient clamping

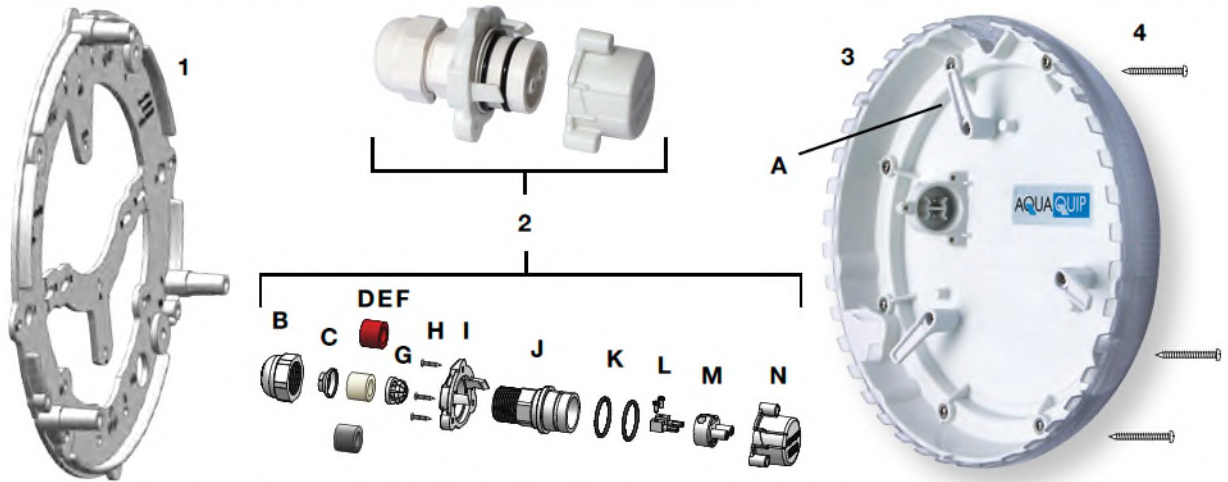
Protection Rating: IPX8 Pressure Watertight





QC LED *Surface Mounted* POOL LIGHT

QC SERIES LIGHT PARTS DIAGRAM



QC SERIES LED LIGHT PARTS LIST

A	APL 802 Cable Hook	H	APL 806 Screw Kit for Cable Bracket
B	ASN 366 Cable Nut	I	APL 804 Cable Bracket
C	ASN 367 Washer	J	ASN 363 Connector Housing
D	ASN 370 Red Seal (suits .75mm ² - 1mm ² Cable)	K	ASN 380 O-ring Kit
E	ASN 371 White Seal (suits 1.5mm ² Cable)	L	ASN 611 Female Pin Kit
F	ASN 372 Black Seal (suits 2.5mm ² - 4mm ² Cable)	M	ASN 362 Female Plug
G	ASN 365 Cable Clamp	N	APL 803 Cable Cap



APL 071 Retro-Fit Screw Kit for wall mounting (optional extra)



Diag 3

Diagram 3 shows the Quick Connect Plug Kit at the end of the cable now attached to the rear of the QC Series LED Pool Light.

Excess cable wraps around the three hooks located on the rear of the pool light.

The Light is factory-sealed and assembled with a clear lens with proprietary diffusion material, ensuring the vivid colours of the LEDs (contained within) are projected and evenly dispersed throughout the pool.

ORDER CODES

PARTS TO SUIT QC SERIES SURFACE MOUNTED LIGHTS

LED 021	BLUE LED QC LIGHT ONLY
LED 022	WHITE LED QC LIGHT ONLY
LED 023	GREEN LED QC LIGHT ONLY
LED 024	MULTI-COLOUR LED QC LIGHT ONLY
LED 420	20M CABLE WITH QC PLUG KIT
LED 430	30M CABLE WITH QC PLUG KIT
LED 375	QC SERIES QUICK CONNECT PLUG KIT
APL 050	UNIVERSAL MOUNTING BRACKET
APL 071	RETRO FIT SCREW KIT FOR WALL MOUNTING (BRACKET TO WALL)
APL 006	SCREW KIT FOR UNIVERSAL MOUNTING BRACKET (LIGHT TO BRACKET)
APL 045	FIBREGLASS & ABOVE-GROUND VINYL MOUNTING KIT

ELECTRICAL CONNECTION AND OPERATION

- Install Light(s) and Transformer(s) in accordance with AS/NZS 3000:2007 as amended.
- Aqua-Quip's extra low voltage Plug-in Transformers have either 1, 2 or 4 secondary outputs, as described in the table.

CODE	DESCRIPTION
APL511	1 X 12v 30VA output, runs 1 light
APL512	2 X 12v 50VA outputs, runs 2 lights
APL514	4 X 12v 50VA outputs, runs 4 lights



RETRO-FIT QC LED POOL LIGHT

DESCRIPTION: SURFACE MOUNTED

Suitable For: Replaces all brands in existing Concrete Pools and some brands in existing Fibreglass Pools

Colours Available: White, Blue, Green, Multi-Colour featuring Colour Selection Palette

Stainless Steel Option: No

Detachable Cable: Yes

Cable Types: No Cable supplied. Light connects to existing cable.

Voltage: Variable Technology, 12v AC ~ 32v AC



Profile:
 Protrusion from wall: 67mm
 Lens Diameter: 230mm

ORDER CODES

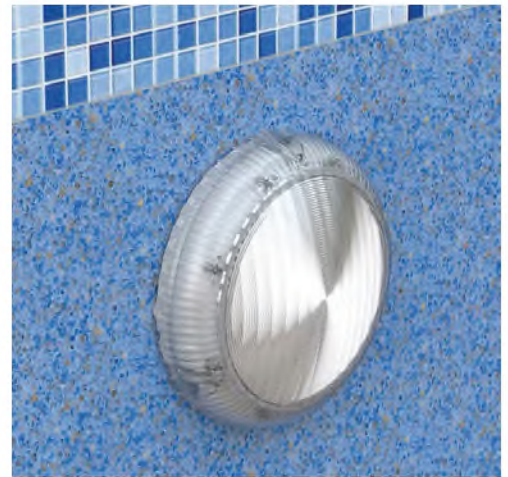
RETRO-FIT QC SERIES SURFACE MOUNTED LIGHTS

Complete with Light, Universal Mounting Bracket and Quick Connect Plug Kit to connect to existing cable, no Transformer

LED 011	BLUE LED RETRO-FIT LIGHT & UNIVERSAL BRACKET
LED 012	WHITE LED RETRO-FIT LIGHT & UNIVERSAL BRACKET
LED 013	GREEN LED RETRO-FIT LIGHT & UNIVERSAL BRACKET
LED 014	MULTI-COLOUR LED RETRO-FIT LIGHT & UNIVERSAL BRACKET

PARTS TO SUIT QC SERIES LED LIGHTS

LED 021	BLUE LED QC LIGHT ONLY
LED 022	WHITE LED QC LIGHT ONLY
LED 023	GREEN LED QC LIGHT ONLY
LED 024	MULTI-COLOUR LED QC LIGHT ONLY
LED 375	QC SERIES QUICK CONNECT PLUG KIT
APL 050	UNIVERSAL MOUNTING BRACKET
APL 075	LOCATING BAR ASSEMBLY FOR SM400 AND FILTRITE
LED 114	QC EXTENSION CABLE JOINING KIT (1mm ² CABLE)
LED 115	QC EXTENSION CABLE JOINING KIT (1.5mm ² CABLE)
LED 120	QC EXTENSION CABLE JOINING KIT (4mm ² CABLE)
ASN 119	THICK CABLE KIT FOR QC & EVO
APL 071	RETRO FIT SCREW KIT FOR WALL MOUNTING (BRACKET TO WALL)
APL 006	SCREW KIT FOR UNIVERSAL MOUNTING BRACKET (LIGHT TO BRACKET)



Aqua-Quip QC Series LED Retro-Fit Pool Lights replace the following brands of surface mounted pool lights:

Stroud C150, Stroud SM400, Swimworld-Poolstore, Waterco Litestream, Waterco Britestream, Spa Electrics SE3M, SPA Electrics GK6/ GK7/GKRX, Poolrite, Aqua-Quip, Filtrite, Autumn Solar/Questa/ Chameleon/Magic, Sunline-Rivendale, Emaux E-Lumen and Varimode.

SPECIFICATIONS:

Nominal Supply Voltage: 12v AC ~ 32v AC

Power Consumption (white, blue, green): 16 VA max.

Power Consumption (multi-colour): 22 VA max.

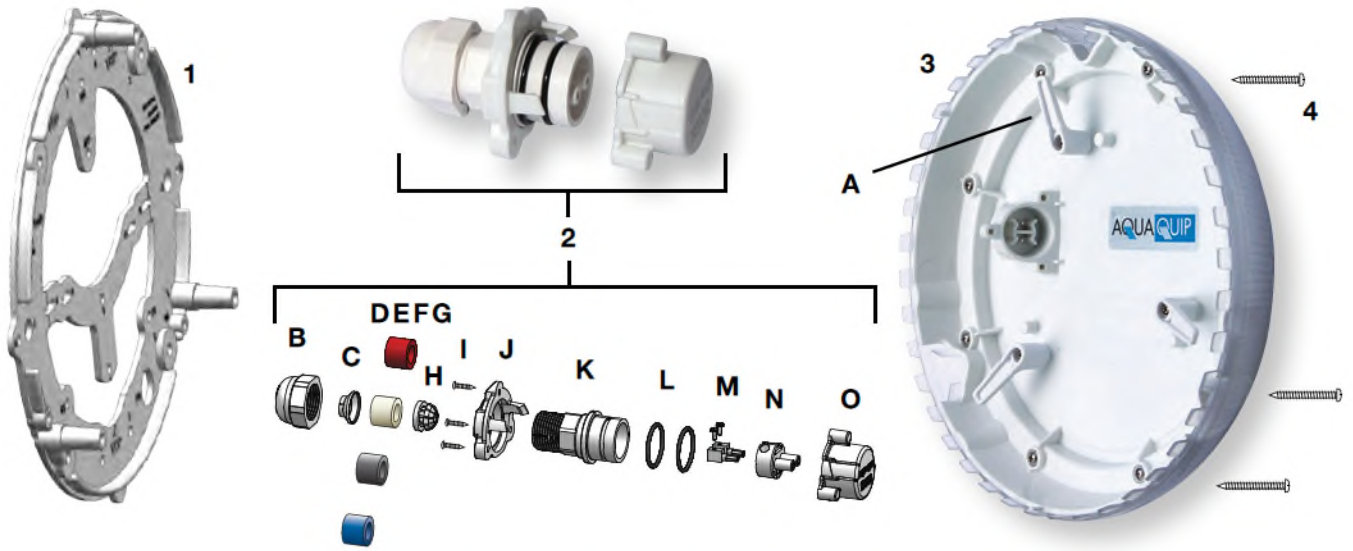
Light Colour: White >5,000K, Blue 475nm, Green 525nm

Fault Protection: Thermal cutout. Voltage Transient clamping

Protection Rating: IPX8 Pressure Watertight



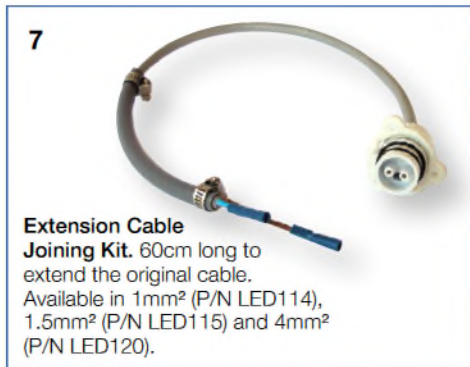
RETRO-FIT QC LED POOL LIGHT



QC Retro-Fit LED Pool Lights are supplied with:
Universal Mounting Bracket (Item 1) which has a variety of screw holes to ensure compatibility with all brands;
Quick Connect Plug Kit (Item 2) allowing the light to be connected to the existing cable; **colour coded cable seals** of varying sizes enable the light to be connected to cables of varying thicknesses;
Light Only (Item 3) which is factory sealed and supplied with a clear lens with proprietary diffusion material ensures the vivid colours of the LEDs are projected and evenly dispersed throughout the pool.

PE6 Screw Kit (**Item 4**) secures the light to the 3 posts on the Uni Bracket.

OPTIONAL EXTRAS See Items 5-8 below



QC SERIES LED LIGHT PARTS LIST

A	APL 802 Cable Hook
B	ASN 366 Cable Nut
C	ASN 367 Washer
D	ASN 374 Blue Seal (suits gauge .75mm ² Cable)
E	ASN 370 Red Seal (suits 1mm ² Cable)
F	ASN 371 White Seal (suits 1.5mm ² Cable)
G	ASN 372 Black Seal (suits 2.5mm ² - 4mm ² Cable)
H	ASN 365 Cable Clamp
I	APL 806 Screw Kit for Cable Bracket
J	APL 804 Cable Bracket
K	ASN 363 Connector Housing
L	ASN 380 O-ring Kit
M	ASN 611 Female Pin Kit
N	ASN 362 Female Plug
O	APL 803 Cable Cap



ELECTRICAL CONNECTION AND OPERATION

QC LED Retro-Fit Lights connect to the existing circular profile pool light cables and contain Variable Voltage Technology (12v AC ~ 32v AC), allowing connection to existing 12v AC, 24v AC and 32v AC transformers.